

Zenair Europe

Service Letter



This Service Letter (SL) has been issued by Zenair SARL (Europe).

S.L. Number:	ZE-2009-05																				
Date of issue:	November 24, 2009																				
Subject:	Aileron Bell-Crank stiffeners for the CH 601 XL/CH 650E.																				
Affected Models:	All CH 601XL/CH 650E models built and operated as ULM (MTOM of 450 kg + 5%) as defined by LTF-UL standards (or similar).																				
Serial Number(s)	All affected models																				
Manufactured by:	Czech Aircraft Works (CZAW) and others.																				
Purpose:	According to the <u>Institute for Reliability Engineering</u> at the <i>Technical University of Hamburg, Germany</i> , this modification has the potential to further reduce the possibility of non-linear vibrations in the aileron control system of the affected aircraft.																				
Directed Action(s):	<p>This upgrade includes one (1) extra channel per wing to support the aileron bell-crank attachment and additional “L” angles on the top and bottom wing skins as illustrated on the drawings (6Z-1G). See references for exact materials, dimensions, locations and installation details.</p> <p>Parts include:</p> <table border="1"> <thead> <tr> <th style="color: green;">DESCRIPTION</th> <th style="color: green;">PART NUMBER</th> <th style="color: green;">QTY.</th> </tr> </thead> <tbody> <tr> <td>Bell-crank Support Channel</td> <td>6Z – 1G – 1</td> <td>2</td> </tr> <tr> <td>Standard “L” Angle</td> <td>6Z – 1G – 2</td> <td>8</td> </tr> <tr> <td>Inspection door covers</td> <td>6Z – 1G – 3</td> <td>2</td> </tr> <tr> <td>A4 and A5 Rivets</td> <td></td> <td>As needed</td> </tr> <tr> <td></td> <td></td> <td></td> </tr> </tbody> </table> <p>Note: The wing skin does not need to be removed to install this upgrade, however, additional access/inspection holes need to be cut into the bottom wing surfaces to allow for installation of these parts.</p>			DESCRIPTION	PART NUMBER	QTY.	Bell-crank Support Channel	6Z – 1G – 1	2	Standard “L” Angle	6Z – 1G – 2	8	Inspection door covers	6Z – 1G – 3	2	A4 and A5 Rivets		As needed			
DESCRIPTION	PART NUMBER	QTY.																			
Bell-crank Support Channel	6Z – 1G – 1	2																			
Standard “L” Angle	6Z – 1G – 2	8																			
Inspection door covers	6Z – 1G – 3	2																			
A4 and A5 Rivets		As needed																			
Effective date:	As soon as practicable.																				
Compliance:	<p>Zenair recommends compliance prior to disregarding the operating limitations outlined in German DAeC advisory number LTA08-011-1 (or similar).</p> <p style="color: red;">Caution: Local conditions may vary - always comply with applicable regulations.</p>																				
References:	<ul style="list-style-type: none"> • Zenair Drawing No. <u>6Z-1G (Feb. 22, 2010)</u> • Additional info in AMD S-LSA Service Manual for CH 601 XL* <p>* available free on the internet; call for more details.</p>																				

Remarks:

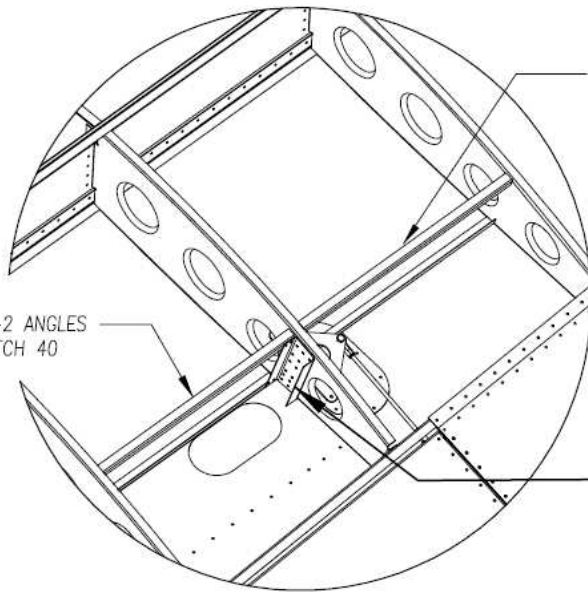
Compliance with this Service Letter should be recorded in the aircraft's maintenance log.

Address inquiries concerning this Service Bulletin to your nearest Zenair representative or to:

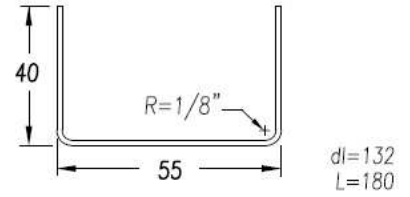
Zenair Sarl Z.I. No.2 Aérodrome de Valenciennes 59121 PROUVY, France

Tel: 0033-(0)6-46-30-43-30 e-mail: Europe@zenair.com

www.zenairulm.com



6Z-1G-2 ANGLES
OUTBOARD OF RR #7
TOP AND BOTTOM
A4 PITCH 50

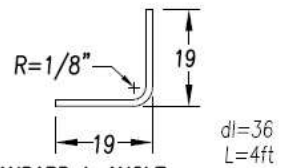


dl=132
L=180

6Z-1G-1 BELLCRANK SUPPORT CHANNEL
t=.040" 6061-T6 (2 REQ'D)

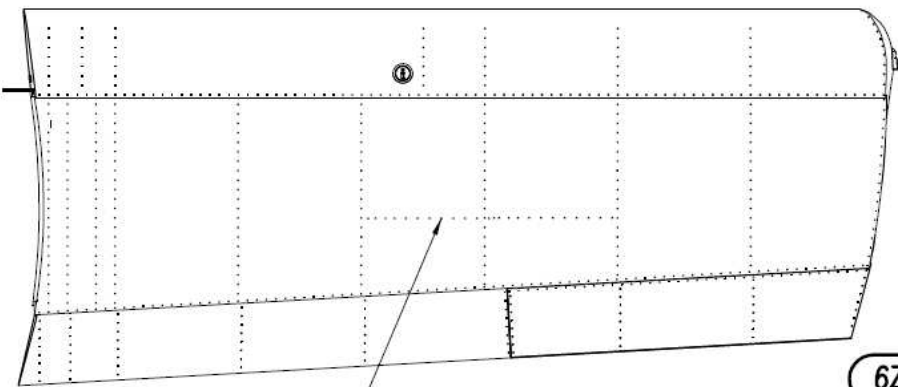
6Z-1G-2 ANGLES
A4 PITCH 40

6Z-1G-1
REPLACES 6W6-10 BY 6Z-1G-1
ADD 2 RIVETS A5 IN ENDS
OF 6Z-1G-2 ANGLES



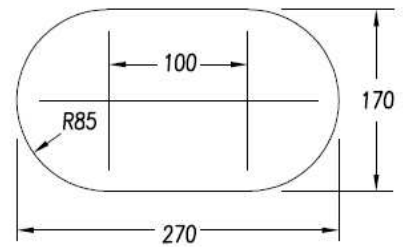
dl=36
L=4ft

6Z-1G-2 STANDARD L ANGLE
t=.025" 6061-T6 (4 REQ'D)
TRIM TO FIT

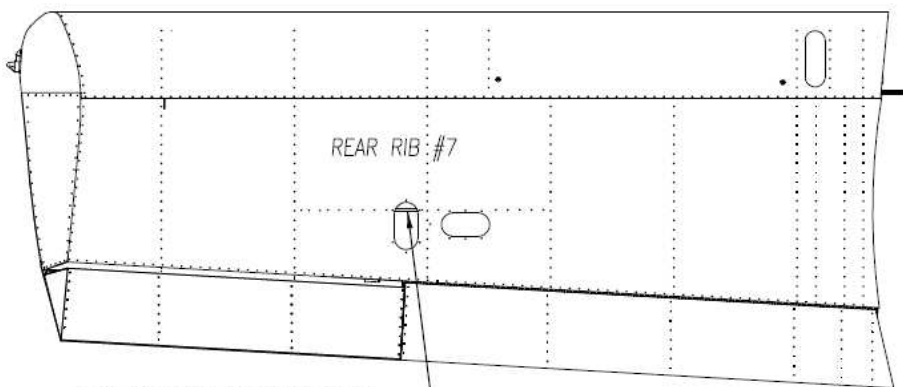


TOP SIDE OF RIGHT WING

6Z-1G-2 ANGLE IN LINE WITH
FRONT FLANGE OF BELLCRANK
SUPPORT CHANNEL 6Z-1G-1
TOP AND BOTTOM



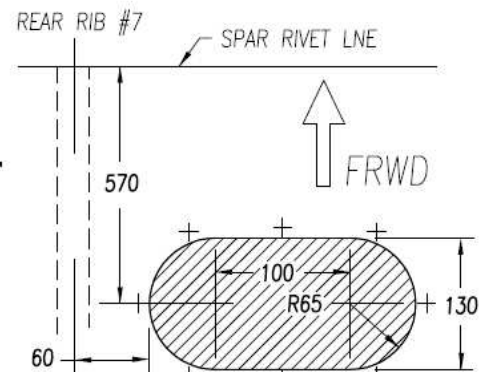
6Z-1G-3 AILERON ACCESS COVER
t=.025" 6061-T6 (4 REQ'D)
OVERLAPS ON OUTSIDE



BOTTOM SIDE OF RIGHT WING

AILERON ACCESS COVER IS
REPLACED TO OVERLAP ON
OUTSIDE WITH NUTPLATES
OR RIV-NUTS ON BOTTOM SKIN

NOTE: HOLE NOT REQUIRED IF REAR TOP SKIN
IS REMOVED TO DO MODIFICATION.



CUTOUT IN BOTTOM SKIN 6W8-2
TO REPLACE CHANNEL WITH 6Z-1G-1
AND TO ADD STANDARD L ANGLES.
Actual position of cut-out may vary.
Cut opening so that it will not interfere
with reinforcement angle to be installed

ZODIAC
CH 601 XL / 650

ULM Aileron Bell-crank Changes

6Z-1G

Copyright© 2009 CHRIS HEINTZ

DATE: 22 FEB 2010